



Government of India
Ministry of Earth Sciences
India Meteorological Department



Press Release

Date: 29th May 2026

Time of Issue: 1400 hours IST

Subject: (i) The prevailing heat wave have abated from most parts of Northwest India, and it is likely to abate from most parts of central India from tomorrow.

(ii) Isolated heavy rainfall likely over Northeast India and south Peninsular India from 1st to 04th June.

(iii) Moderate to Severe Thunderstorm activity with squally wind speed likely over Northwest India, Central India and East India during 29th – 31st May.

Advance of Southwest Monsoon 2026 (Annexure I):

- ❖ The Northern Limit of Monsoon continue to pass through 9°N/60°E, 8.5°N/65°E, 8°N/70°E, 7.5°N/75°E, 8°N/80°E, 11°N/85°E, 15°N/90°E, 19°N/95°E and 21°N/97°E.
- ❖ Conditions are favourable for further advance of southwest monsoon into some more parts of southwest & southeast Arabian Sea, Lakshadweep area, southwest, eastcentral & westcentral Bay of Bengal, remaining parts of southeast Bay of Bengal and some parts of northeast Bay of Bengal during next 2-3 days.

Realised weather during past 24 hours ending at 0830 hours IST of today, the 29th May, 2026:

- ❖ **Very Heavy rainfall (11-20cm)** has been recorded at isolated places over Bihar, Tamil Nadu, Puducherry & Karaikal.
- ❖ **Heavy rainfall (7-11 cm)** has been recorded at isolated places over Sub-Himalayan West Bengal & Sikkim Kerala & Mahe, Coastal Andhra Pradesh & Yanam, Rayalaseema, Telangana, Uttarakhand.
- ❖ **Thunderstorm accompanied with Squally/Gusty winds with speed reaching 70-105 kmph** prevailed at isolated places over Bihar, Odisha ,Coastal Andhra Pradesh & Yanam, East Uttar Pradesh, Uttarakhand, West Uttar Pradesh, Haryana ; **with speed reaching 50-70 kmph** over Telangana, Vidarbha, Saurashtra Kutch, West Madhya Pradesh, Jharkhand, Gangetic West Bengal, Lakshadweep, Jammu-Kashmir-Ladakh-Gilgit-Baltistan-Muzaffarabad, Punjab, East Madhya Pradesh, ; **with speed reaching 40-50 kmph** over Madhya Maharashtra ,Gujarat Region, Chhattisgarh, Tamil Nadu, Puducherry & Karaikal
- ❖ **Hailstorm** occurred at isolated places over Uttarakhand, Punjab,Haryana,West Uttar Pradesh, West Rajasthan, Madhya Pradesh.
- ❖ **Heat wave conditions prevailed over** Madhya Pradesh, Haryana, Punjab, Uttar Pradesh, Rajasthan, Vidarbha.

Temperature Conditions during past 24 hours till 0830 hours IST of today:

- ❖ **Day/Maximum Temperatures (as on 28-05-2026):** Maximum temperatures were in the range of 43- 47°C over parts of central India adjoining Uttar Pradesh, Telangana, Rajasthan and 40-43°C over rest parts of the country except parts of Northeast India, East India, Western Himalayan region and west south peninsular India. **The highest maximum temperature of 47.5°C was reported at BANDA (UTTAR PRADESH).**
- ❖ **Day/Maximum Temperature Departures (as on 28-05-2026):** appreciably above normal (3.1°C to 5.0°C) at a few places over East Madhya Pradesh, Himachal Pradesh, Vidarbha; at isolated places over Chhattisgarh, East Rajasthan, East Uttar Pradesh, Haryana-Chandigarh-Delhi, Jammu & Kashmir, Madhya Maharashtra, Tamil Nadu, Puducherry & Karaikal, Telangana, West Madhya Pradesh, West Rajasthan, West Uttar Pradesh; above normal (1.6°C to 3.0°C) at a few places over Konkan & Goa, Lakshadweep, Marathwada, Uttarakhand; at isolated places over Bihar, Coastal Andhra Pradesh & Yanam, Gangetic West Bengal, Gujarat Region, Kerala & Mahe, Odisha, Saurashtra & Kutch, Sub-Himalayan West Bengal & Sikkim; were appreciably below normal (-3.1°C to -5.0°C) at isolated places over Andaman & Nicobar Islands, Assam & Meghalaya, Bihar, Gangetic West Bengal, Jammu & Kashmir; below normal (-3.0°C to -1.6°C) at isolated places over Coastal Andhra Pradesh & Yanam, East Uttar Pradesh, Haryana-Chandigarh-Delhi, Jharkhand, Kerala & Mahe, Nagaland, Manipur, Mizoram & Tripura, Odisha, Rayalaseema, Sub-Himalayan West Bengal & Sikkim, Telangana, West Uttar Pradesh and were near normal over rest parts of the country

- ❖ **Night Temperatures/Minimum temperatures (as on 29-05-2026)** were **appreciably above normal (3.1°C to 5.0°C)** over East Rajasthan, Konkan & Goa. **above normal (1.6°C to 3.0°C)** Kerala & Mahe, Tamil Nadu, Puducherry & Karaikal, Telangana, Madhya Pradesh, Bihar, Odisha, Karnataka, Uttar Pradesh, Punjab, Himachal Pradesh, Uttarakhand, West India and below normal or near normal over rest parts of the country.

Weather Systems, Forecast and Warnings (Annexure II & III):

- ❖ The Western Disturbance as a trough in middle tropospheric westerlies with its axis at 5.8 km above mean sea level now runs roughly along Long. 75°E to the north of Lat. 32°N.
- ❖ An **upper air cyclonic circulation** over Central Pakistan & neighbourhood in lower tropospheric levels
- ❖ A **trough** from the cyclonic circulation over Central Pakistan to northeast Arabian sea in lower tropospheric levels.
- ❖ A **trough runs** from the cyclonic circulation over Central Pakistan to interior Odisha in lower tropospheric levels.
- ❖ An **upper air cyclonic circulation** over north interior Odisha & neighbourhood in lower tropospheric levels has merged the above trough.
- ❖ A **trough** in westerlies with its axis in middle tropospheric levels runs roughly along Long. 90°E to the north of Lat. 21°N persists.
- ❖ An **upper air cyclonic circulation** over central Assam & neighbourhood in lower tropospheric levels
- ❖ An **upper air cyclonic circulation** over Southwest Bay of Bengal and adjoining Tamil Nadu coast in middle tropospheric levels.
- ❖ An **upper air cyclonic circulation** over Southeast Arabian Sea & neighbourhood middle tropospheric levels
- ❖ An **upper air cyclonic circulation** over Eastcentral & Southeast Bay of Bengal in lower and middle tropospheric levels
- ❖ An **upper air cyclonic circulation** lies over east Bangladesh & neighbourhood in lower tropospheric levels.

Under the influence of above systems, the following weather is likely:

Northeast India:

- ❖ **Scattered to Fairly widespread light to moderate rainfall likely over the region during the week.**
- ❖ **Isolated heavy rainfall** likely over Arunachal Pradesh during 01st – 04th June, Assam & Meghalaya during 02nd – 4th June; Nagaland, Manipur, Mizoram & Tripura during 31st May- 3rd June.

South Peninsular India:

- ❖ **Isolated to scattered** light to moderate rainfall with **thunderstorm, lightning & gusty winds (speed reaching 40-50 kmph)** likely over Tamil Nadu, Puducherry & Karaikal, North Interior Karnataka, Coastal Andhra Pradesh & Yanam, Rayalaseema, Telangana 29th May – 02nd June; South Interior Karnataka during 29th & 30th May.
- ❖ **Thundersquall (wind speed reaching 50-60 kmph gusting to 70 kmph)** likely over Coastal Andhra Pradesh & Yanam, Rayalaseema during 29th -31st May.
- ❖ **Isolated heavy rainfall** likely over Tamil Nadu, Puducherry & Karaikal during 29th May -01st June; Kerala & Mahe during 29th May and during 31st May-4th June; Lakshadweep during 31st May-4th June; South Interior Karnataka on 29th May; Coastal Andhra Pradesh & Yanam during 29th – 31st May; Rayalaseema on 29th & 30th May

East India:

- ❖ **Fairly widespread to widespread** light to moderate rainfall with **thunderstorm, lightning & gusty winds (speed reaching 40-50 kmph)** likely over Andaman & Nicobar Islands during 29th May-04th June; Sub-Himalayan West Bengal & Sikkim on 29th May and during 2nd-4th June.
- ❖ **Isolated to scattered** light to moderate rainfall with **thunderstorm, lightning & gusty winds (speed reaching 40-50 kmph)** likely over Gangetic West Bengal on 30th May; Jharkhand, Odisha during 31st May-04th June; Bihar on 31st May; Odisha during 31st May – 02nd June;
- ❖ **Thundersquall (wind speed reaching 80-90 kmph gusting to 100kmph)** likely over Bihar on 29th May.
- ❖ **Thundersquall (wind speed reaching 60-70 kmph gusting to 80 kmph)** likely over Gangetic West Bengal on 29th; Odisha on 29th & 30th May.
- ❖ **Thundersquall (wind speed reaching 50-60 kmph gusting to 70 kmph)** likely over Jharkhand during 29th & 30th May; Bihar on 30th May.
- ❖ **Isolated heavy to very heavy rainfall likely** over Andaman & Nicobar Islands, Odisha during 29th & 30th May; Jharkhand on 29th May; Bihar on 30th May; **with very heavy rainfall** over Bihar on 29th May.
- ❖ **Isolated Hailstorm activity** likely over Bihar on 29th May.

Northwest India:

- ❖ **Scattered to fairly widespread** light to moderate rainfall with **thunderstorm, lightning & gusty winds (speed reaching 40-50 kmph)** likely over Jammu-Kashmir, Uttarakhand on 30th May; Himachal Pradesh on 29th & 30th May.
- ❖ **Scattered to fairly widespread** light to moderate rainfall with **thunderstorm, lightning & gusty winds (speed reaching 40-50 kmph)** likely over Uttar Pradesh on 31st May; Rajasthan during 31st May- 02nd June.
- ❖ **Thundersquall (wind speed reaching 80-90 kmph gusting to 100 kmph)** likely over West Uttar Pradesh on 29th May
- ❖ **Thundersquall (wind speed reaching 70-80 kmph gusting to 90 kmph)** likely over Punjab, Haryana Chandigarh & Delhi, East Uttar Pradesh on 29th May.
- ❖ **Thundersquall (wind speed reaching 60-70 kmph gusting to 80 kmph)** likely Punjab, Haryana Chandigarh & Delhi on 30th May; Rajasthan on 29th & 30th May;
- ❖ **Thundersquall (wind speed reaching 50-60 kmph gusting to 70 kmph)** likely over Jammu-Kashmir, Uttarakhand on 29th; Uttar Pradesh on 30th May.
- ❖ **Isolated heavy rainfall** likely over Uttarakhand, East Uttar Pradesh on 29th; West Uttar Pradesh on 29th & 30th May.
- ❖ **Isolated Hailstorm activity** likely over Himachal Pradesh, Uttarakhand, Uttar Pradesh on 29th May and Punjab, Haryana Chandigarh & Delhi, Rajasthan on 29th & 30th May.
- ❖ **Duststorm** very likely at isolated places over East Uttar Pradesh on 29th May; West Rajasthan during 29th May - 02nd June; East Rajasthan on 29th & 30th May

Central India:

- ❖ **Isolated** light to moderate rainfall with **thunderstorm, lightning & gusty winds (speed reaching 40-50 kmph)** likely over Madhya Pradesh, Chhattisgarh 01st & 2nd June; Vidarbha 02nd June;
- ❖ **Thundersquall (wind speed reaching 50-60 kmph gusting to 70 kmph)** likely over Madhya Pradesh, Chhattisgarh during 29th - 31st May; Vidarbha during 29th - 01st June.
- ❖ **Isolated heavy rainfall** likely over West Madhya Pradesh on 29th, 31st May & 01st June.
- ❖ **Isolated Hailstorm activity** likely over Madhya Pradesh, Chhattisgarh on 29th & 30th May; Vidarbha on 30th & 31st May.

West India:

- ❖ **Isolated** light to moderate rainfall with **thunderstorm, lightning & gusty winds (speed reaching 40-50 kmph)** likely over Konkan & Goa during 31st May-04th June; Madhya Maharashtra during 30th May - 03rd June; Marathawada during 31st May - 03rd; Gujarat state during 30th May - 04th June.
- ❖ **Isolated heavy rainfall** likely over Gujarat Region during 31st May - 2nd June.

Forecast of maximum/day temperatures:

- ❖ **Gradual fall** in maximum temperatures **by 5-7°C** likely over Northwest India **till 30th May and gradual rise by 5-7°C during 31st May-04th June.**
- ❖ No significant change in maximum temperatures likely over Central India till 29th May and gradual fall by 3-5°C during 30th May-04th June
- ❖ No significant change in maximum temperatures likely over Maharashtra State till 30th May and gradual fall by 2-3°C during 31st May-04th June.
- ❖ Gradual fall by 3-5°C in maximum temperatures likely over Gujarat State till 4th June.
- ❖ No significant change in maximum temperatures likely over the rest parts of country till 04th June 2026.

Heat Wave, Hot & Humid weather and Warm Night conditions warning:

- ❖ **Heat wave conditions** very likely in scattered places over Vidarbha on 29th May
- ❖ **Heat wave conditions** very likely in isolated/some pockets over Chhattisgarh, East Madhya Pradesh, West Rajasthan on 29th; Telangana, West Madhya Pradesh on 29th & 30th May
- ❖ **Hot and humid** weather conditions likely to prevail over Tamil Nadu, Puducherry & Karaikal on 29th May;

Fisherman Warning:

Fishermen are advised not to venture into the following areas:

Bay of Bengal: Over Gulf of Mannar & adjoining Comorin area, along and off Tamil Naidu & Sri Lanka Coasts, over many parts of south & adjoining central Bay of Bengal, over south & adjoining north Andaman Sea during 29th May to 03rd June, 2026. Along and off west Bengal adjoining north Odisha coasts on 29th May.

Arabian Sea: Along & off north Gujarat coast and adjoining northeast Arabian Sea during 29th May to 31st May, 2026; along & off Oman coast adjoining parts of northwest & westcentral Arabian sea on 02nd June.

Along and off Somalia coast, adjoining some parts of southwest Arabian Sea during on 29th May to 03rd June, 2026.

Weather conditions and forecast over Delhi/NCR during 29th May-01st June, 2026 (Annexure IV)

For more details, kindly refer National Weather Bulletin:

https://mausam.imd.gov.in/responsive/all_india_forecast_bulletin.php

For District wise warnings refer: <https://mausam.imd.gov.in/responsive/districtWiseWarningGIS.php>

For Fishermen warning refer <https://rsmcnewdelhi.imd.gov.in/fishermenwarning.php>

Significant rainfall recorded (in cm) (from 0830 hours IST of yesterday to 0830 hours IST of today):

- ❖ **Bihar:** Siswan(14)
- ❖ **Tamilnadu:** Colachel 12, Alaputhur 7,
- ❖ **Rayalaseema:** Raju Palem 9,
- ❖ **Sub-Himalayan West Bengal & Sikkim:** Kalimpong(8)
- ❖ **Telangana:** Achampeta 8,
- ❖ **Uttarakhand:** Kalsi (8)
- ❖ **Coastal Andhra Pradesh & Yanam:** Gudivada 7
- ❖ **Kerala & Mahe:** Mavelikkara 7, Mancompu 7

Gusty winds (in ≥ 40 kmph) (from 0830 hours IST of yesterday to 0830 hours IST of today):

- ❖ **Bihar:**Patna107,Rajgir76,Ziradei72
- ❖ **Odisha :**Malkangiri 98,Sonepur 85
- ❖ **Coastal Andhra Pradesh & Yanam:** Maruteru 89, Cs_Puram 81, Peddapuram 78, Lam_Guntur 63, Bhimavaram 56, Gopannapalem_Eluru 56, Chirala 50, Mylavaram_College_Of_Engineer 48, Gopalnagar_Machilipatnam 48
- ❖ **East Uttar Pradesh:** Mirzapur 89, Varanasi 78, Pratapgarh 67, Raebareli 63 , Fursatganj 63, Varanasi 56, Ghazipur 46, Banda 46, Fatehgarh46, Prayagraj 46, Kanpur 44 , Kanpur 44
- ❖ **Uttarakhand:** Maldevata 87, Ranichauri 85, Champawat68, Jollygrant67,Roorkee59, Chamoli 56, Mukteshwar/Pantnagar /Kosiyakutoli/Dehradun46, Hatibharkala43.
- ❖ **West Uttar Pradesh:** Bulandshahar 78, Moradabad 74, Gb Nagar 65, Bareilly 61, Agra & Aligarh56, Hindon, Agra 50 , Bareilly, Moradabad & Bareilly 46,
- ❖ **Haryana:** Jind 78 ,Rohtak 61 ,Karnal 67,Palwal 44
- ❖ **Telangana:** Rars_Polasa_Jagityal 67, Bellampally 61, Palenoolm56, Adilabad52, Ramagiri_Khilla52, Kothagudem50, Sircilla48, Gadipally46, Prakasam_Jammikunta44, Mamnoor43, Kaveri_Siddipet 41, Karimnagar41
- ❖ **Vidarbha:**Wardha 65
- ❖ **Saurashtrakutch:** Bhachau 65
- ❖ **West Madhya Pradesh:** Gwalior 65
- ❖ **Jharkhand:** Netarhat57
- ❖ **Gangetic West Bengal:** Kalna56
- ❖ **Lakshadweep:** Rars_Tirupati 56, Agricultural_College_ Badvel 44, Ars_Ananthapuram 43
- ❖ **Jammu-Kashmir-Ladakh-Gilgit-Baltistan-Muzaffarabad:**Ramban 52,Gulmarg 48,samba 43
- ❖ **Punjab :**Mohali56 ,Bathinda54
- ❖ **East Madhya Pradesh:** Jabalpur 52
- ❖ **Madhya Maharashtra :** Shahada Nandurbar 48 , Kalwan Nashik 46 ,
- ❖ **Gujarat Region:**48 ArsarnejAhmd
- ❖ **Chattisgarh:** Koriya 44
- ❖ **Tamil Nadu, Puducherry & Karaikal:** Tenkasi44, Thiruchendur44

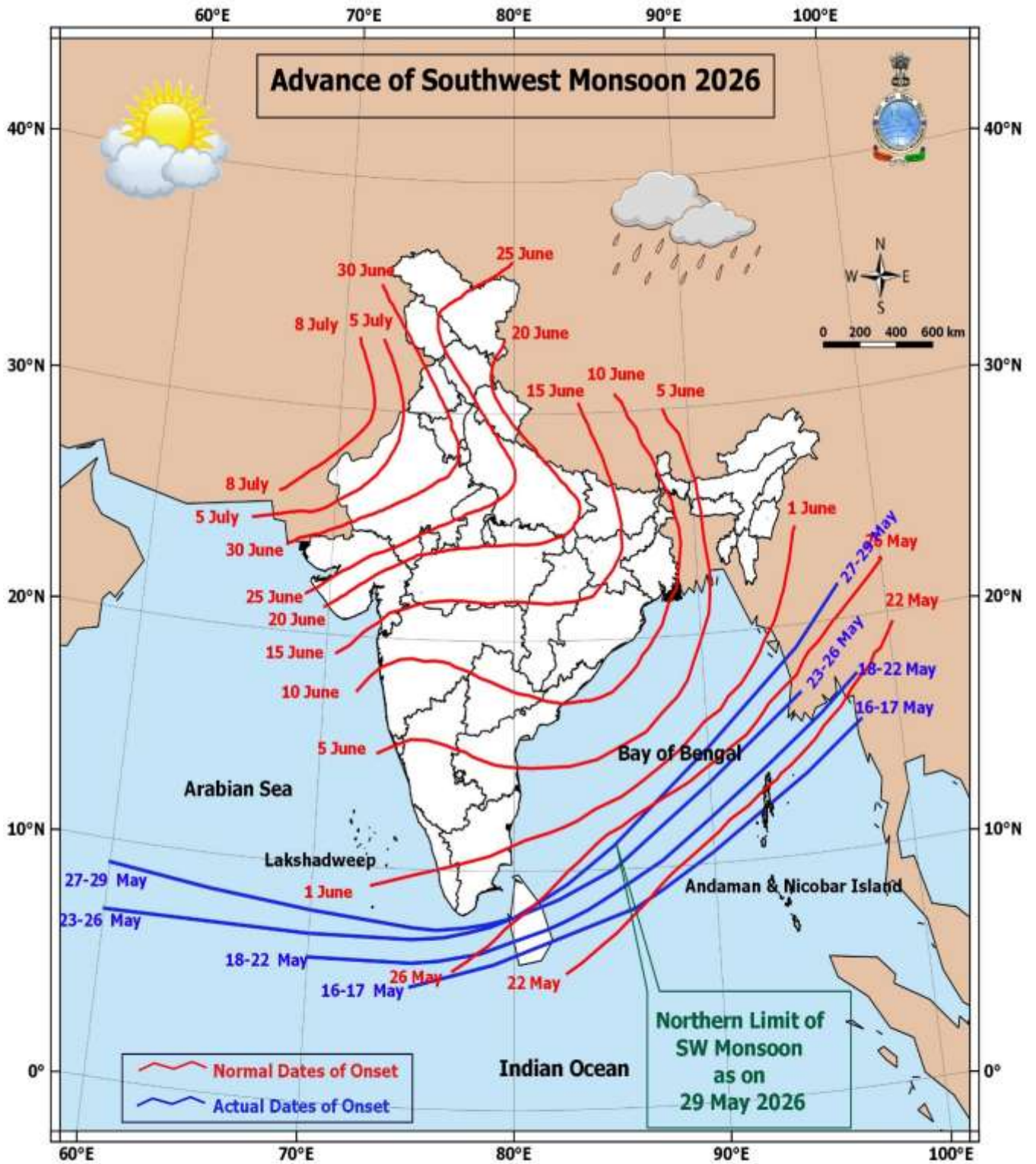
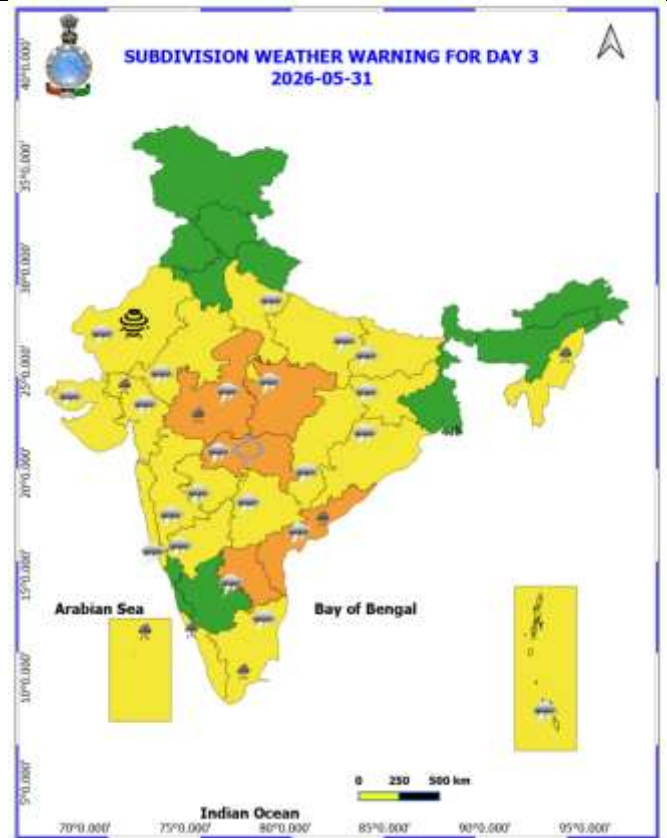
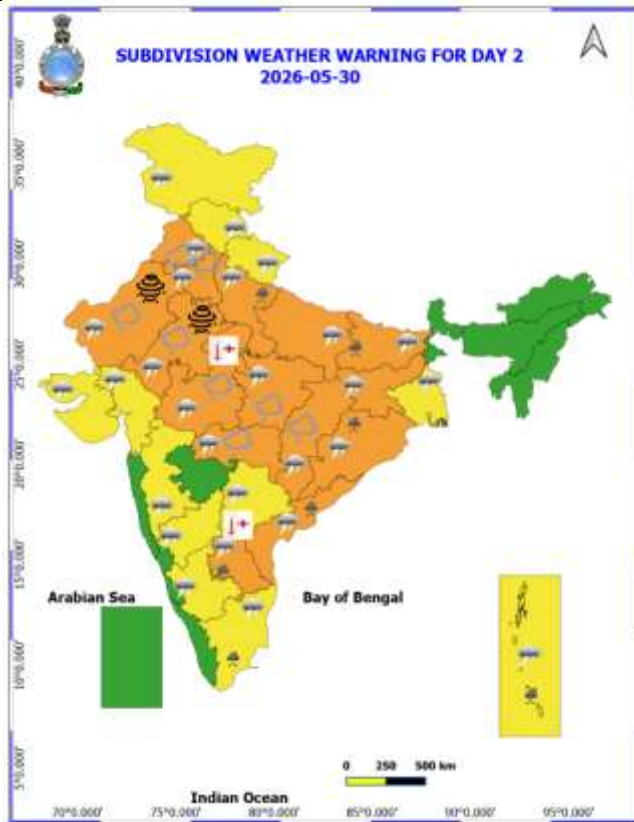
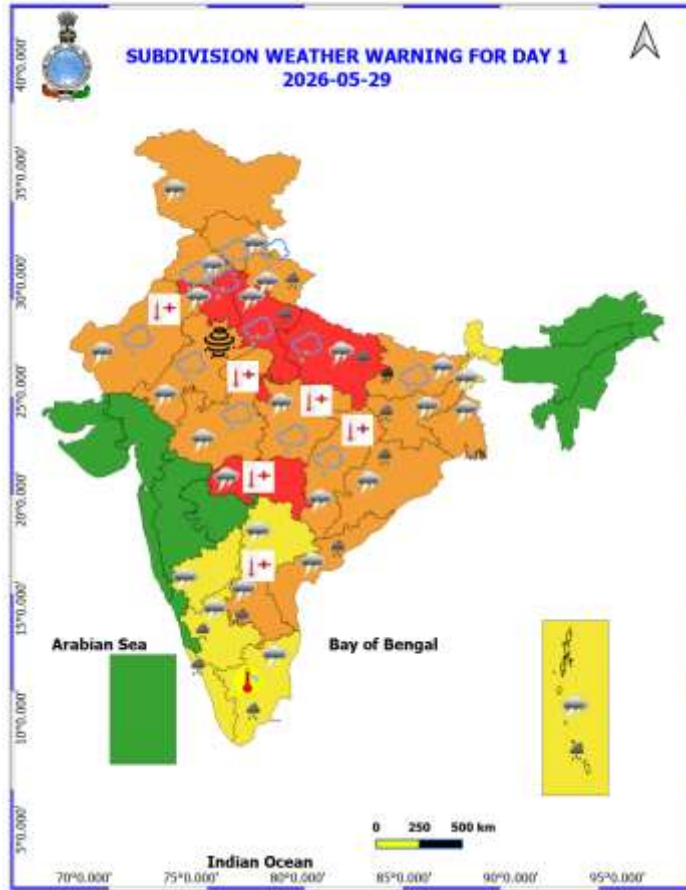
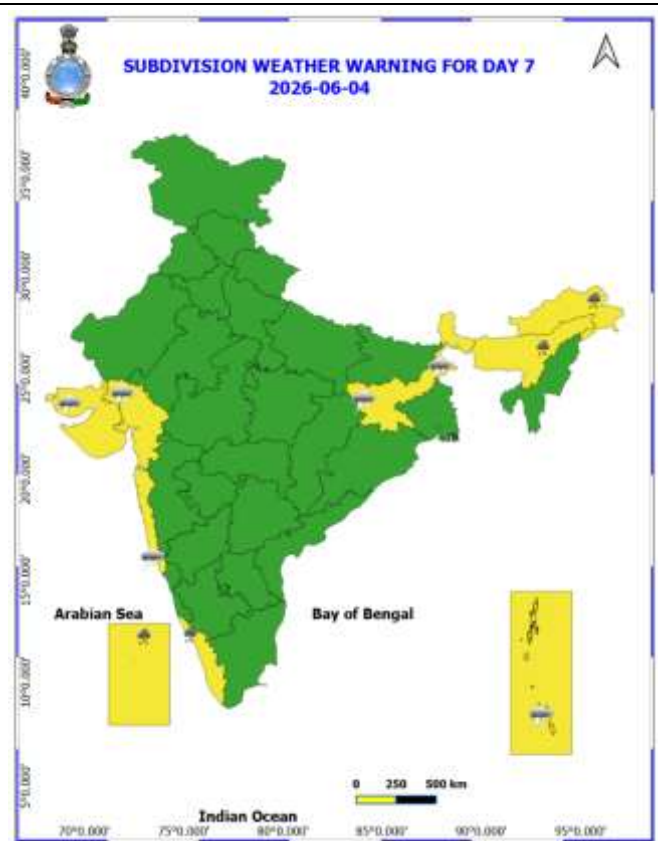
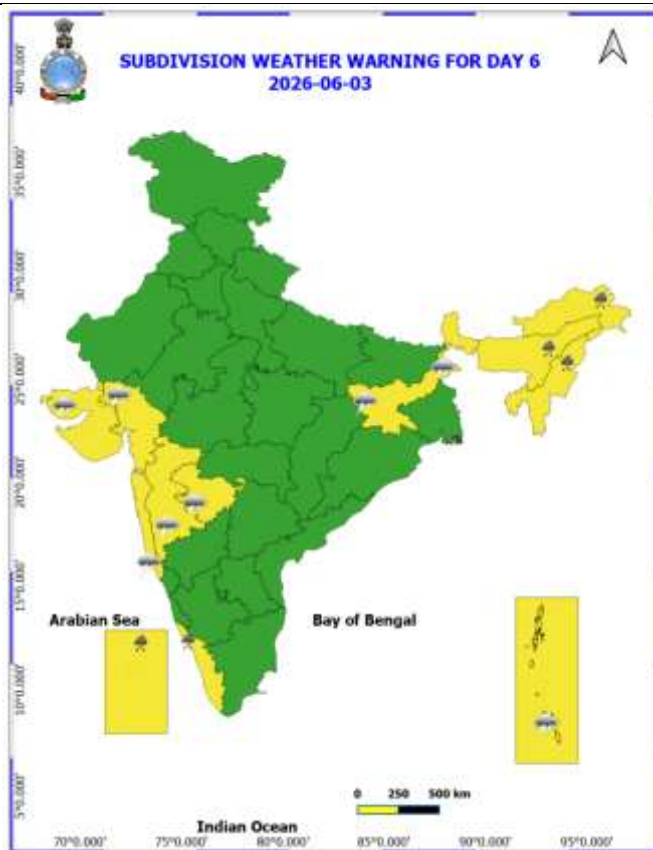
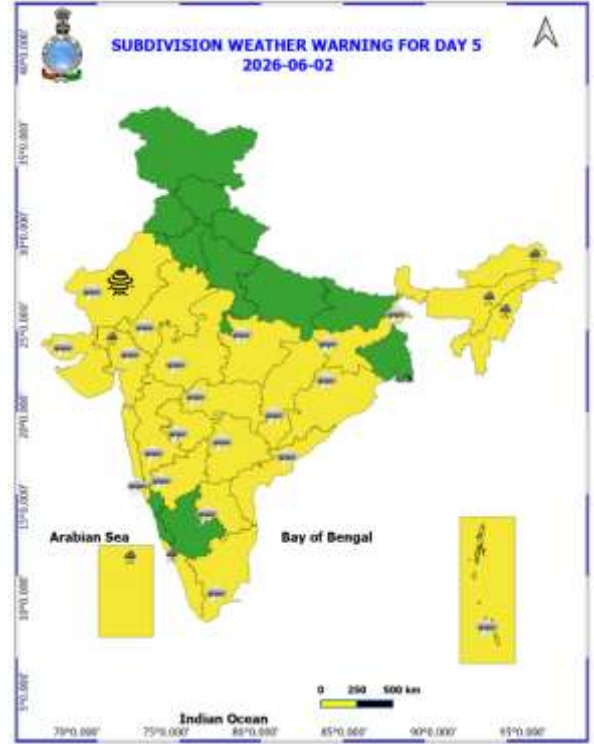
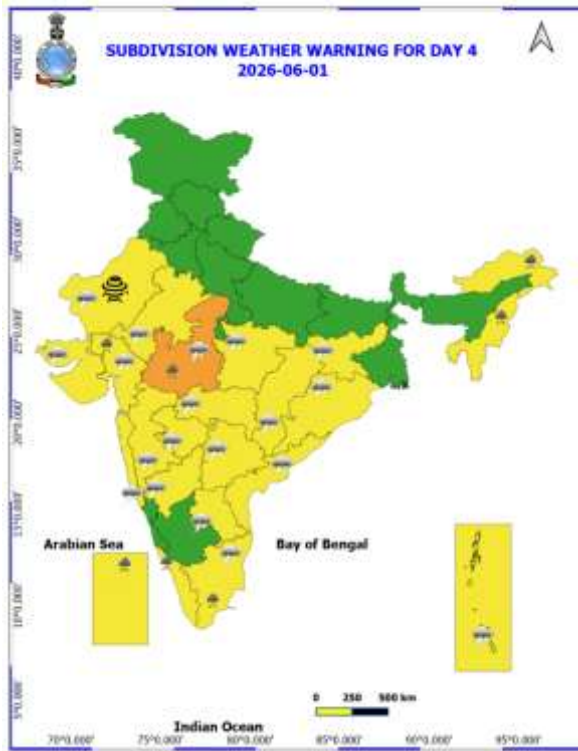


Table-1								
7 Days Rainfall Forecast								
S.No.	Subdivision	29- May	30- May	31- May	1- Jun	2- Jun	3- Jun	4- Jun
		Day 1	Day 2	Day 3	Day 4	Day 5	Day 6	Day 7
1	ANDAMAN & NICOBAR ISLANDS	WS	WS	WS	WS	WS	WS	WS
2	ARUNACHAL PRADESH	ISOL	SCT	SCT	FWS	FWS	FWS	WS
3	ASSAM & MEHGHALAYA	ISOL	SCT	SCT	FWS	FWS	WS	WS
4	NAGALAND, MANIPUR, MIZORAM AND TRIPURA	SCT	SCT	SCT	FWS	FWS	FWS	FWS
5	SUB HIMALAYAN WEST BENGAL & SIKKIM	SCT	SCT	ISOL	ISOL	SCT	FWS	FWS
6	GANGETIC WEST BENGAL	WS	SCT	ISOL	ISOL	ISOL	ISOL	ISOL
7	ODISHA	SCT	SCT	ISOL	ISOL	ISOL	ISOL	ISOL
8	JHARKHAND	FWS	SCT	SCT	ISOL	ISOL	ISOL	ISOL
9	BIHAR	WS	SCT	ISOL	ISOL	ISOL	DRY	DRY
10	EAST UTTAR PRADESH	FWS	FWS	SCT	ISOL	ISOL	DRY	DRY
11	WEST UTTAR PRADESH	FWS	FWS	SCT	SCT	ISOL	DRY	DRY
12	UTTARAKHAND	WS	FWS	SCT	SCT	ISOL	ISOL	ISOL
13	HARYANA, CHANDIGARH & DELHI	FWS	FWS	ISOL	DRY	DRY	DRY	ISOL
14	PUNJAB	SCT	FWS	ISOL	DRY	DRY	DRY	ISOL
15	HIMACHAL PRADESH	SCT	SCT	ISOL	ISOL	ISOL	ISOL	ISOL
16	JAMMU AND KASHMIR AND LADAKH	SCT	SCT	DRY	DRY	DRY	DRY	ISOL
17	WEST RAJASTHAN	ISOL	SCT	ISOL	ISOL	ISOL	ISOL	ISOL
18	EAST RAJASTHAN	ISOL	SCT	ISOL	ISOL	ISOL	ISOL	ISOL
19	WEST MADHYA PRADESH	ISOL	SCT	FWS	SCT	SCT	ISOL	ISOL
20	EAST MADHYA PRADESH	ISOL	SCT	SCT	ISOL	ISOL	ISOL	ISOL
21	GUJRAT REGION	DRY	ISOL	SCT	FWS	FWS	SCT	SCT
22	SAURASHTRA & KUTCH	DRY	ISOL	ISOL	ISOL	ISOL	ISOL	ISOL
23	KONKAN & GOA	ISOL	ISOL	ISOL	ISOL	ISOL	ISOL	ISOL
24	MADHYA MAHARASHTRA	ISOL	ISOL	ISOL	ISOL	ISOL	ISOL	ISOL
25	MARATHWADA	ISOL	ISOL	ISOL	ISOL	ISOL	ISOL	ISOL
26	VIDARBHA	ISOL	ISOL	SCT	ISOL	ISOL	ISOL	ISOL
27	CHHATTISGARH	ISOL	ISOL	ISOL	ISOL	ISOL	ISOL	ISOL
28	COASTAL ANDHRA PRADESH	SCT	SCT	ISOL	ISOL	ISOL	ISOL	ISOL
29	TELANGANA	ISOL	ISOL	ISOL	ISOL	ISOL	ISOL	ISOL
30	RAYALASEEMA	SCT	SCT	ISOL	ISOL	ISOL	ISOL	ISOL
31	TAMILNADU & PUDUCHERRY	ISOL	SCT	SCT	SCT	ISOL	SCT	SCT
32	COSTAL KARNATAKA	SCT	ISOL	ISOL	ISOL	SCT	SCT	SCT
33	NORTH INTERIOR KARNATAKA	ISOL	ISOL	ISOL	ISOL	ISOL	ISOL	ISOL
34	SOUTH INTERIOR KARNATAKA	SCT	SCT	SCT	ISOL	ISOL	ISOL	ISOL
35	KERALA AND MAHE	FWS	FWS	WS	WS	WS	WS	WS
36	LAKSHADWEEP	FWS	FWS	WS	WS	WS	WS	WS

- As the lead period increases forecast accuracy decrease.





- Action may be taken based on ORANGE AND REDCOLOUR warnings.
- Vulnerable regions likely urban and hilly areas action may be initiated for heavy rainfall warning.
- As the lead period increases forecast accuracy decreases.

Detailed district-wise Multi-Hazard weather warning for next five days available at <https://mausam.imd.gov.in/responsive/districtWiseWarningGIS.php>

Weather forecast over Delhi/NCR during 29th May to 1st June 2026

Past Weather:

There has been fall in maximum temperatures by 3-5°C and fall in minimum temperature by 2-4°C during past 24 hours over Delhi. The maximum temperatures were in the range of 39-41°C and the minimum temperatures are in the range 24-26°C respectively during past 24 hours over Delhi. The minimum temperatures are below normal (-1.6°C to -3.0°C) at most places and normal (-1.5°C to 1.5°C) over remaining parts of Delhi. The maximum temperatures are below normal (-1.6°C to -3.0°C) at isolated places and normal (-1.5°C to 1.5°C) over remaining parts of Delhi. Partly cloudy sky becoming generally cloudy sky. Very Light to Light Rain accompanied with Thunderstorm/Lightning and Gusty wind speed reaching up to 61 kmph over Delhi during past 24 hours. Mainly clear sky with surface wind speeds up to 20 kmph gusting to 36 kmph likely to prevailed from east direction over the region in the forenoon today.

Weather Forecast:

29.05.2026: Partly cloudy sky becoming generally cloudy sky towards afternoon. One or two spells of very light/light rain accompanied with thunderstorm/lightning and strong surface winds speed reaching 60-70 kmph gusting to 80 kmph towards afternoon to night. The maximum temperatures over Delhi are likely to be in the range of 35°C to 37°C. The maximum temperatures will be appreciably below normal (-3.1°C to -5.0°C) at most places over Delhi. The predominant surface wind is likely to be from the southeast direction with surface wind speed reaching up to 20 kmph during the afternoon hours. The wind speed will increase becoming up to 30 kmph from the east direction during evening and night.

30.05.2026: Partly cloudy sky becoming generally cloudy sky towards afternoon. A spell of very light to light rain accompanied with thunderstorm/lightning and gusty wind speed 40-50 kmph gusting to 60kmph towards afternoon to evening. The maximum and minimum temperatures over Delhi are likely to be in the range of 34°C to 36°C and 22°C to 24°C, respectively. The minimum temperature will be below normal (-1.6°C to -3.0°C) at most places, and maximum temperatures will be markedly below normal (more than -5.0°C) at most places over Delhi. The predominant surface wind is likely to be from east direction with surface wind speed reaching up to 25 kmph during the morning hours. The wind speed will increase becoming up to 30 kmph from southeast direction during the afternoon. The wind speed will decrease up to 20 kmph from the east direction during evening and night.

31.05.2026: Partly cloudy sky. Very light to light rain accompanied with thunderstorm/ lightning and gusty wind speed 40-50 kmph towards morning. The maximum and minimum temperatures over Delhi are likely to be in the range of 35°C to 37°C and 24°C to 26°C, respectively. The minimum temperature will be below normal (-1.6°C to -3.0°C) at most places, and maximum temperatures will be appreciably below normal (-3.1°C to -5.0°C) at most places over Delhi. The predominant surface wind is likely to be from the east direction with wind reaching up to 20 kmph during the morning hours. The surface wind speed will be decrease becoming up to 18 kmph from southeast direction during the afternoon. The wind speed will decrease becoming up to 15 kmph from the east direction during evening and night.

01.06.2026: Partly cloudy sky. The maximum and minimum temperatures over Delhi are likely to be in the range of 37°C to 39°C and 24°C to 26°C, respectively. The minimum temperature will be below normal (-1.6°C to -3.0°C) at most places, and maximum temperatures will be below normal (-1.6°C to -3.0°C) at most places over Delhi. The predominant surface wind is likely to be from the southeast direction with wind reaching up to 15 kmph during the morning hours. The surface wind speed will increase becoming up to 20 kmph from east direction during the afternoon. The surface wind speed will decrease becoming up to 15 kmph from the south direction during evening and night.

Impact expected and Action Suggested due to thunderstorm with lightning/gusty winds:

Thunderstorms accompanied with lightning and gusty winds (60–70 kmph reaching up to 80 kmph) with dust-raising surface winds are likely to occur.

- **Expected Impacts:** Breaking of tree branches and uprooting of large trees, falling of dead tree limbs, Damage to standing crops, Minor to major damage to power and communication lines due to falling

branches, Partial damage to vulnerable structures due to strong winds, Loose objects may get blown away

- **Advisory for Public Safety:** Keep a close watch on weather updates and worsening conditions, stay indoors and avoid unnecessary travel, Close windows and doors securely, take shelter in safe places and avoid open areas, do not take shelter under trees, do not lie on concrete floors or lean against concrete walls during lightning activity, unplug electrical and electronic appliances, immediately move out of water bodies, stay away from objects that conduct electricity

Citizens are advised to remain alert and follow safety precautions to avoid any loss of life or property.

Impact expected and action suggested due to isolated thunderstorm with lightning, gusty/squally winds & hailstorm over

- ❖ Moderate to Severe Thunderstorm activity with squally wind speed likely over Northwest India, Central India and East India during 29th – 31st May.
- ❖ **Isolated Hailstorm activity** likely over Bihar, Himachal Pradesh, Uttarakhand, Uttar Pradesh on 29th May and Punjab, Haryana Chandigarh & Delhi, Rajasthan, Madhya Pradesh, Chhattisgarh on 29th & 30th May; Vidarbha on 30th & 31st May.

Impact expected:

- Breaking of tree branches, uprooting of large avenue trees. Large dead limbs blown from trees. Damage to Standing crops.
- Minor to Major damage to banana and papaya trees.
- Minor to major damage to power and communication lines due to breaking of branches.
- Strong wind/hail may damage plantation, horticulture and standing crops.
- Partial damage to vulnerable structures due to strong winds.
- Minor damage to kutcha houses/walls and huts.
- Loose objects may fly.

Action suggested:

- People are advised to keep a watch on the weather for worsening conditions and be ready to move to safer places accordingly.
- Stay indoors, close windows & doors and avoid travel if possible.
- Take safe shelters; do not take shelter under trees.
- Do not lie on concrete floors and do not lean against concrete walls.
- Unplug electrical/ electronic appliances.
- Immediately get out of water bodies.
- Keep away from all the objects that conduct electricity.

Impact Expected & Action Suggested due to heavy/very heavy rainfall over

- ❖ **Isolated heavy rainfall** likely over Arunachal Pradesh during 01st – 04th June, Assam & Meghalaya during 02nd – 4th June; Nagaland, Manipur, Mizoram & Tripura during 31st May- 3rd June; Tamil Nadu, Puducherry & Karaikal during 29th May -01st June; Kerala & Mahe during 29th May and during 31st May-4th June; Lakshadweep during 31st May-4th June; South Interior Karnataka on 29th May; Coastal Andhra Pradesh & Yanam during 29th – 31st May; Rayalaseema on 29th & 30th May, Andaman & Nicobar Islands, Odisha during 29th& 30th May; Jharkhand on 29th May; Bihar on 30th May; West Madhya Pradesh on 29th, 31st May & 01st June; Gujarat Region during 31st May – 2nd June; **with very heavy rainfall** over Bihar on 29th May.
- Localized Flooding of roads, water logging in low lying areas and closure of underpasses mainly in urban areas.
- Occasional reduction in visibility due to heavy rainfall.
- Disruption of traffic in major cities due to water logging in roads leading to increased travel time.
- Minor damage to kutcha roads.
- Possibilities of damage to vulnerable structure.
- Localized Landslides/Mudslides/landslips/mudslips/landsinks/mudsinks.
- Damage to horticulture and standing crops in some areas due to inundation.

- It may lead to riverine flooding in some river catchments (for riverine flooding please visit Web page of CWC)

Action Suggested

- Check for traffic congestion on your route before leaving for your destination.
- Follow any traffic advisories that are issued in this regard.
- Avoid going to areas that face the water logging problems often.
- Avoid staying in vulnerable structure.

Impact expected and action suggested due to Heat wave/ severe heat wave conditions:

- ❖ The prevailing heat wave have abated from most parts of Northwest India, and it is likely to abate from most parts of central India from tomorrow.

Orange alert Areas

- High temperature & increased likelihood of heat illness symptoms in people who are either exposed to sun for a prolonged period or doing heavy work.
- High health concern for vulnerable people e.g. infants, elderly, people with chronic diseases.
- Avoid heat exposure– keep cool. Avoid dehydration.
- Drink sufficient water- even if not thirsty.
- Use ORS, homemade drinks like lassi, torani (rice water), lemon water, buttermilk, etc. to keep yourself hydrated.

Yellow alert Areas

- Moderate temperature & heat is tolerable for general public but moderate health concern likely for vulnerable people e.g. infants, elderly, people with chronic diseases.
- Avoid heat exposure.
- Wear lightweight, light colour, loose, cotton clothes.
- Cover your head, use a cloth, hat or umbrella.

Agromet advisories for likely impact of Hailstorms

- In **Himachal Pradesh, Uttarakhand, Punjab, Haryana, Uttar Pradesh, Rajasthan, Madhya Pradesh, Vidarbha** and **Chhattisgarh** use hail nets or hail caps in fruit orchards and vegetable plants to protect them from mechanical damage.
- Ensure effective field drainage to prevent waterlogging. Undertake picking of matured fruits at the earliest. Keep the harvested produce in safe places.

Agromet advisories for likely impact of Heavy Rainfall

- In **Andaman & Nicobar**, postpone irrigation, intercultural operations and application of plant protection measures & fertilizers to the standing crops. Provide adequate drainage in standing-crop fields to prevent waterlogging.
- **Bihar**, withhold irrigation in standing crops. Prepare paddy nursery fields with proper drainage arrangements.
- In **Tamil Nadu**, maintain proper drainage to prevent water stagnation in cotton, rice nurseries, recently sown cumbu and vegetables,
- In **Keralam**, provide adequate drainage for banana, coconut, and other vegetables. Provide support to banana plants.
- In **Lakshadweep**, provide adequate drainage in standing crop fields to prevent waterlogging.
- In **South Interior Karnataka**, undertake harvesting of matured rice after current spells of rain, ensure proper drainage in paddy fields, arecanut and mango orchards. Provide staking to tomato plants.
- In **Andhra Pradesh** - Provide light irrigation to maintain adequate moisture in standing crops such as paddy, *rabi* maize, sorghum, chickpea, groundnut, sesame, sugarcane, vegetables, and fruit orchards.
- In the regions expecting heavy rainfall, including **Uttarakhand, Uttar Pradesh, Jharkhand and Odisha**, withhold irrigation in standing crops, make necessary arrangements to remove excess rainwater from the crop fields.

Agromet advisories for likely impact of High temperatures/ Heat Waves

- In **West Rajasthan**, apply need-based irrigation to green gram and summer cucurbit crops such as bottle gourd, pumpkin, ridge gourd, cucumber, bitter gourd, and summer ladyfinger, as well as to young fruit plants such as mango, amla, pomegranate, wood apple, and plum. Undertake soil mulching/mulching with straw/polythene to reduce water loss by evaporation.
- In **Madhya Pradesh**, apply light irrigation to maize, *moong*, *urd*, groundnut, and vegetable crops as required.
- In **Chhattisgarh** - Apply light irrigation after weeding and hoeing in *rabi* maize, banana, and papaya plantations. Complete harvesting of wheat and chickpea, and ensure safe storage.
- In **Maharashtra - Vidarbha**, provide light and frequent irrigation to vegetables and orchards during morning or evening hours, with increased frequency during critical growth stages. Irrigate sugarcane, summer groundnut, vegetables, and orchards as required; use organic or straw mulch in vegetables and orchards; cover banana bunches with leaves; and use shade nets in newly planted banana plantations.
- In **Telangana**, provide irrigation to mango orchards and vegetable crops, as required.

Agromet advisories for likely impact of Thunderstorm / Gusty Winds

- Shift the harvested produce in safer places or cover the produce with tarpaulin sheets in the fields. Tie the harvested crops securely and cover them to minimize the risk of displacement from strong surface winds.
- Provide mechanical support to horticultural crops and staking or support to vegetables and young fruit plants / fruit-bearing plants to avoid lodging due to strong winds.

Livestock / Poultry / Fisheries

- Keep the animals inside the shed during hailstorms/ heavy rainfall and provide them with balanced feed.
- Store feed and fodder in a safe place to prevent spoilage.
- Construct an outlet with proper netting around the ponds to drain excess water, thereby preventing fish from escaping in the event of overflow.
- In regions with high temperatures and heat waves, provide clean, hygienic, and ample drinking water for animals, and cover the roofs of poultry sheds with grass to reduce the adverse effects.
- In regions with high temperatures and heat waves, provide clean, hygienic, and ample drinking water for animals, and cover the roofs of poultry sheds with grass to reduce the adverse effects.

Legends & abbreviations:

- ❖ **Heavy Rain:**64.5115.5mm; **Very Heavy Rain:**115.6204.4mm; **Extremely Heavy Rain:** >204.4mm.
- ❖ **Obsy:** Observatory; **Automatic Weather Station;** **ARG:** Automatic Rain Gauge; **dist:** District; **NH:** National Highway; **KVK:** Krishi Vigyan Kendra; **DVC:** Damodar Valley Corporation; **PTO:** Part Time Office, **Aero:** Aerodrome, **IAF:** Indian Air Force.
- ❖ **Region wise classification of meteorological Sub-Divisions:**
 - **Northwest India:** Western Himalayan Region (Jammu-Kashmir-Ladakh-Gilgit-Baltistan-Muzaffarabad, Himachal Pradesh and Uttarakhand); Punjab, Haryana Chandigarh & Delhi; West Uttar Pradesh, East Uttar Pradesh, West Rajasthan and East Rajasthan.
 - **Central India:** West Madhya Pradesh, East Madhya Pradesh, Vidarbha and Chhattisgarh.
 - **East India:** Bihar, Jharkhand, Sub-Himalayan West Bengal & Sikkim; Gangetic West Bengal, Odisha and Andaman & Nicobar Islands.
 - **Northeast India:** Arunachal Pradesh, Assam & Meghalaya and Nagaland, Manipur, Mizoram & Tripura.
 - **West India:** Gujarat Region, Saurashtra & Kutch, Coastal Maharashtra (Konkan) & Goa, Madhya Maharashtra and Marathawada.
 - **South India:** Coastal Andhra Pradesh & Yanam, Telangana, Rayalaseema, Coastal Karnataka, North Interior Karnataka, South Interior Karnataka, Kerala & Mahe, Tamil Nadu, Puducherry & Karaikal and Lakshadweep.

LEGENDS

1. अंडमान और निकोबार द्वीपसमूह
2. अरुणाचल प्रदेश
3. असम और मेघालय
4. नागालैंड, मणिपुर, मिजोरम और त्रिपुरा
5. उप-हिमालयी पश्चिम बंगाल और सिक्किम
6. गंगीय पश्चिम बंगाल
7. ओडिशा
8. झारखंड
9. बिहार
10. पूर्वी उत्तर प्रदेश
11. पश्चिम उत्तर प्रदेश
12. उत्तराखंड
13. हरियाणा, चंडीगढ़ और दिल्ली
14. पंजाब
15. हिमाचल प्रदेश
16. जम्मू और कश्मीर और लद्दाख
17. पश्चिम राजस्थान
18. पूर्वी राजस्थान
19. पश्चिम मध्य प्रदेश
20. पूर्वी मध्य प्रदेश
21. गुजरात
22. सौराष्ट्र
23. कोंकण और गोवा
24. मध्य महाराष्ट्र
25. मराठवाड़ा
26. विदर्भ
27. छत्तीसगढ़
28. तटीय आंध्र प्रदेश और यनम
29. तेलंगाना
30. रायलसीमा
31. तमिलनाडु, पुडुचेरी और कराईकल
32. तटीय कर्नाटक
33. आंतरिक उत्तरी कर्नाटक
34. आंतरिक दक्षिणी कर्नाटक
35. केरल और माहे
36. लक्षद्वीप



1. Andaman & Nicobar Islands
2. Arunachal Pradesh
3. Assam & Meghalaya
4. Nagaland, Manipur, Mizoram & Tripura
5. Sub-Himalayan West Bengal & Sikkim
6. Gangetic West Bengal
7. Odisha
8. Jharkhand
9. Bihar
10. East Uttar Pradesh
11. West Uttar Pradesh
12. Uttarakhand
13. Haryana, Chandigarh & Delhi
14. Punjab
15. Himachal Pradesh
16. Jammu & Kashmir and Ladakh
17. West Rajasthan
18. East Rajasthan
19. West Madhya Pradesh
20. East Madhya Pradesh
21. Gujarat
22. Saurashtra
23. Konkan & Goa
24. Madhya Maharashtra
25. Marathwada
26. Vidarbha
27. Chhattisgarh
28. Coastal Andhra Pradesh & Yanam
29. Telangana
30. Rayalaseema
31. Tamilnadu, Puducherry & Karaikal
32. Coastal Karnataka
33. North Interior Karnataka
34. South Interior Karnataka
35. Kerala & Mahe
36. Lakshadweep

SPATIAL DISTRIBUTION (% of Stations reporting)

% Stations	Category	% Stations	Category
76-100	Widespread (WS/Most Places)	26-50	Scattered (SCT/A Few Places)
51-75	Fairly Widespread (FWS/Many Places)	1-25	Isolated (ISOL)

- | | | |
|----------------------|----------------------|--------------|
| Fog | Heavy Snow | Cold Wave |
| Heavy Rain | Dust Storm | Cold Day |
| Very Heavy Rain | Heat Wave | Ground Frost |
| Extremely Heavy Rain | Warm Night | |
| Thunder & Lightning | Hot Day | |
| Hailstorm | Hot & Humid | |
| Dust Raising Winds | Strong Surface Winds | |

COLOUR CODED WARNING

No Warning (No Action)
Watch (Be Aware)
Alert (Be Prepared To Take Action)
Warning (Take Action)

Probabilistic Forecast

Terms	Probability of Occurrence (%)
Unlikely	< 25
Likely	25 - 50
Very Likely	50 - 75
Most Likely	> 75

* Red colour warning does not mean "Red Alert", Red colour warning means "Take Action".
Forecast and Warning for any day is valid from 0830 hours IST of day till 0830 hours IST of next day.
For more details, kindly visit <https://mausam.imd.gov.in> or contact: 011-2434-4599
(Service to the Nation since 1875)

DEFINITION/CRITERIA

Rain/ Snow *	<p>Heavy: 64.5 to 115.5 mm/cm *</p> <p>Very Heavy: 115.6 to 204.4 mm/cm*</p> <p>Extremely Heavy: > 204.4 mm/cm *</p>
Heat Wave	<p>When maximum temperature of a station reaches $\geq 40^{\circ}\text{C}$ for plains and $\geq 30^{\circ}\text{C}$ for hilly regions</p> <p>(a) Based on Departure from normal</p> <p>Heat Wave: Maximum Temperature Departure from normal 4.5°C to 6.4°C.</p> <p>Severe Heat Wave: Maximum Temperature Departure from normal $\geq 6.5^{\circ}\text{C}$</p> <p>(b). Based on Actual maximum temperature</p> <p>Heat Wave: When actual maximum temperature $\geq 45^{\circ}\text{C}$.</p> <p>Severe Heat Wave: When actual maximum temperature $\geq 47^{\circ}\text{C}$</p> <p>(c). Criteria for heat wave for coastal stations</p> <p>When maximum temperature departure is $>4.5^{\circ}\text{C}$ from normal. Heat Wave may be described provided maximum temperature $\geq 37^{\circ}\text{C}$</p>
Warm Night	<p>When maximum temperature remains 40°C</p> <p>Warm Night: When minimum temperature departure 4.5°C to 6.4°C.</p> <p>Severe Warm Night: When minimum temperature departure $>6.4^{\circ}\text{C}$.</p>
Cold Wave	<p>When minimum temperature of a station $\leq 10^{\circ}\text{C}$ for plains and $\leq 0^{\circ}\text{C}$ for hilly regions.</p> <p>(a). Based on departure</p> <p>Cold Wave: Minimum Temperature Departure from normal -4.5°C to -6.4°C.</p> <p>Severe Cold Wave: Minimum Temperature Departure from normal $\leq -6.5^{\circ}\text{C}$</p> <p>(b) Based on actual Minimum Temperature (for Plains only)</p> <p>Cold Wave : When Minimum Temperature is $\leq 4.0^{\circ}\text{C}$</p> <p>Severe Cold Wave: When Minimum Temperature is $\leq 2.0^{\circ}\text{C}$</p> <p>(c) For Coastal Stations</p> <p>When Minimum Temperature departure is $\leq -4.5^{\circ}\text{C}$ & actual Minimum Temperature is $\leq 15^{\circ}\text{C}$</p>
Cold Day	<p>When minimum temperature of a station $\leq 10^{\circ}\text{C}$ for plains and $\leq 0^{\circ}\text{C}$ for hilly regions</p> <p>Based on departure</p> <p>Cold Day: Maximum Temperature Departure from normal -4.5°C to -6.4°C.</p> <p>Severe Cold Day: Maximum Temperature Departure from normal $\leq -6.5^{\circ}\text{C}$</p>
Fog	<p>Phenomenon of small droplets suspended in air and the horizontal visibility $< 1\text{km}$</p> <p>Moderate Fog: When the visibility between 500-200 metres</p> <p>Dense Fog: when the visibility between 50- 200 metres</p> <p>Very Dense Fog: when the visibility < 50 metres</p>
Thunderstorm	Sudden electrical discharges manifested by a flash of light (Lightning) and a sharp rumbling sound (thunder)
Dust/Sand Storm	An ensemble of particles of dust or sand energetically lifted to great heights by a strong and turbulent wind.
Frost	<p>Ice deposits on ground</p> <p>Air temperature $\leq 4^{\circ}\text{C}$ (over Plains)</p>
Squall	<p>A strong wind that rises suddenly, lasts for atleast 1 minute.</p> <p>Moderate: Wind speed 52-61 kmph</p> <p>Severe: Wind speed 62-67 kmph</p> <p>Very Severe: Wind speed >67 kmph</p>
Sea State	<p>Effect of various waves in the sea over specific area</p> <p>Rough to very rough: Wind speed 41-62 kmph (22-33 knots) & Wave height 2.5-6 metre</p> <p>High to very high: Wind speed 63-117 kmph (34-63 knots) & Wave height 6-14 metre</p> <p>Phenomenal: Wind speed >117 kmph (>63 knots) & Wave height >14 metre</p>
Cyclone	<p>Cyclonic Storm: Wind speed 62-67 kmph (34-47 knots)</p> <p>Severe Cyclonic Storm: Wind speed 88-117 kmph (48-63 knots)</p> <p>Very Severe Cyclonic Storm: Wind speed 118-165 kmph (64 - 89 knots)</p> <p>Extremely Severe Cyclonic Storm: Wind speed 166-220 kmph (90 -119 knots)</p> <p>Super Cyclone Storm: Wind speed >220 kmph (>119 knots)</p>

* Red colour warning does not mean "Red Alert", Red colour warning means "Take Action".
Forecast and Warning for any day is valid from 0830 hours IST of day till 0830 hours IST of next day.
For more details, kindly visit <https://mausam.imd.gov.in> or contact: 011-2434-4599
(Service to the Nation since 1875)